

iTest 3.6 What's New?



Windows 10 GUI support

Gantner Q.Station support

High-performance data concentrator allows for

- Up to 15kHz data logging with compatible/capable I/O modules
- Greater host bus bandwidth

Master Schedule

- Schedule of schedules and/or procedures
- Integrations with AutomationPanel
- Visual status indication
- Multiple loops
- Added Touchscreen features

2D/Map Enhancements

- No scripting required
- Rate and channel as properties

Data Log Browser

- Stand-alone utility
- Browse and easily graph data
- Draw reference lines

GUI PC Minimum Requirements

- Windows 7 64 bit
- 2.3GHz processor
- 2 USB ports / 2 Ethernet ports
- 8Gb memory
- Hardware video acceleration required for AutomationPanel

AutomationPanel Enhancements

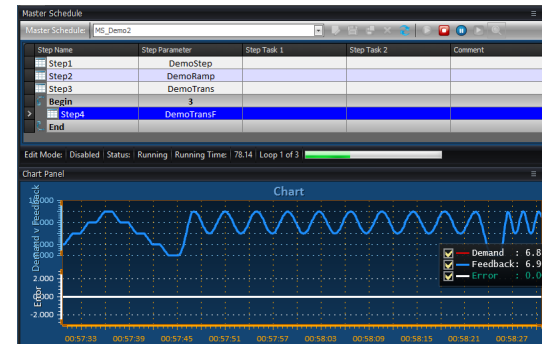
- Automation of Properties
- Chart enhancements
 - live rescaling
 - stacking
 - integrated Limit color and lines
 - additional runtime axis options
- Video panel enhancements
- Grid mode for Tile panel

Drag and Drop Properties

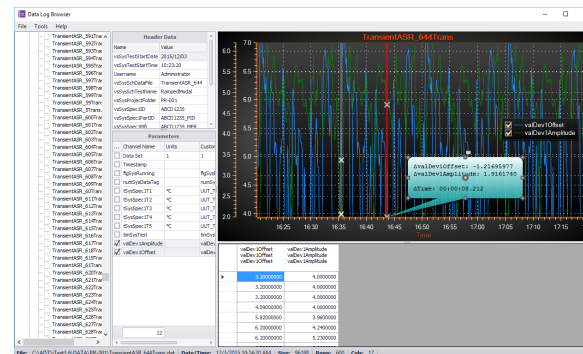
- Drag & drop channel name into property manager
- Simplified system configuration



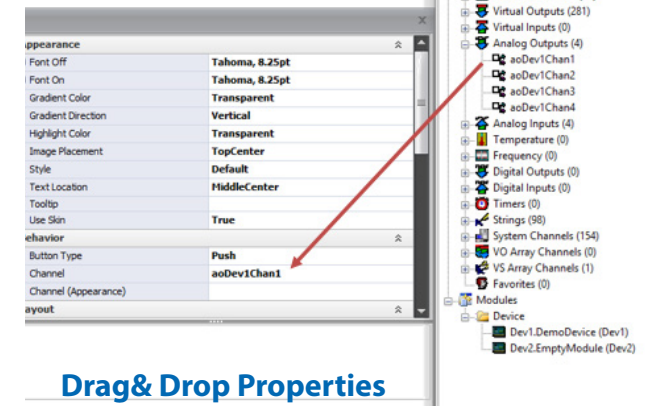
Chart Enhancements



Master Schedule



Data Log Browser



Drag & Drop Properties

