

# iTest 3.7 What's New?

## Python Scripting Integration

- Common, contemporary coding language
- Quickly add and debug Python scripts via Test Manager
- Execute from mailslot commands and Softpanel buttons

## Multiple Test Manager enhancements

- New Editors, incl. Intellisense support
- Online Build option
- Module channel assignment improvement
- Duplicate Many feature
- Keyboard shortcut normalization
- Tile Horizontally option

## ASAM MDF4.1 support

- Easier data storage
- Compressed binary format

## New Help system - improved search functionality

- More accurate, precise and plentiful results
- Keywords highlighted on results page

## GUI PC Minimum Requirements

- Windows 10 or 7 Pro 64 bit
- 2.3GHz processor
- 2 USB ports / 2 Ethernet ports
- 8Gb memory
- Hardware video acceleration required for AutomationPanel

## Multiple AutomationPanel Enhancements

- Drag-drop channel assignment from FlexEdit
- Global Property Manager search
- Procedure assignment in Master Schedules
- Test Point tables in Master Schedule
- Improved Cut-Copy-Paste in panels
- PID Tune interface touchscreen support

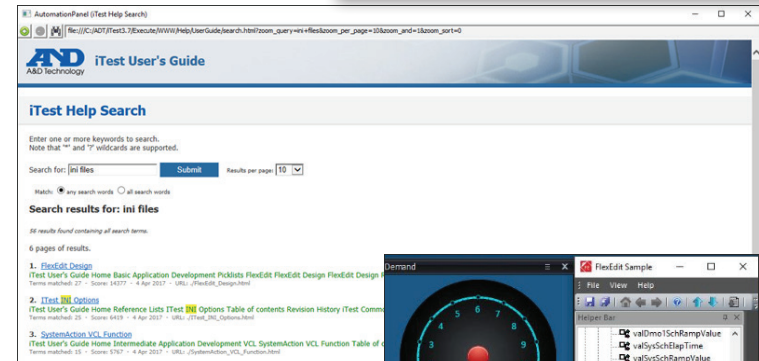
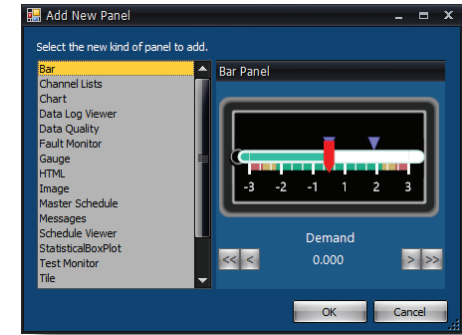
## Real-time system updates

- Linux/Xenomai support with A&D XPRTS
- INtime 6 support

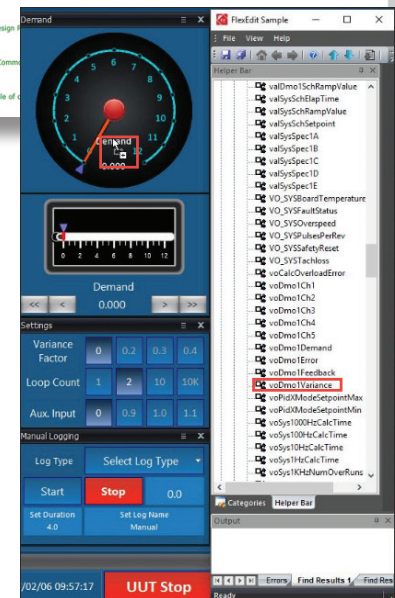
## FlexEdit Enhancements

- FlexEdit INI editor enhancements
- Right-click for Add Channel, Paste and Delete
- Configurations saved as .zip extensions
- Hotkey normalization

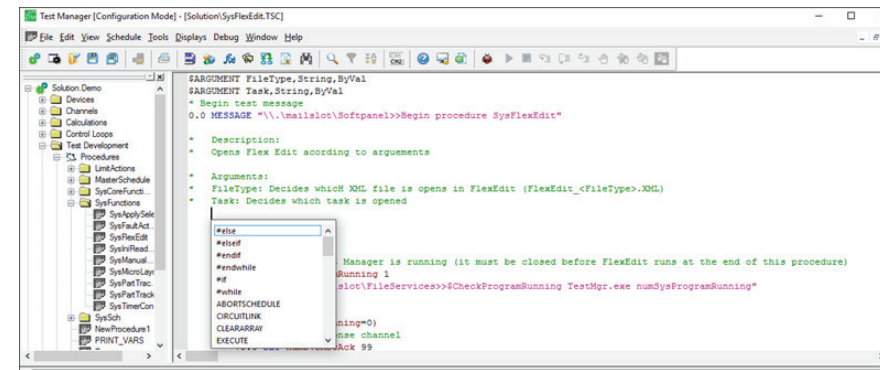
## New Panel Preview



## Improved Search



## AddNewPanel Dialog



## Intellisense Integration